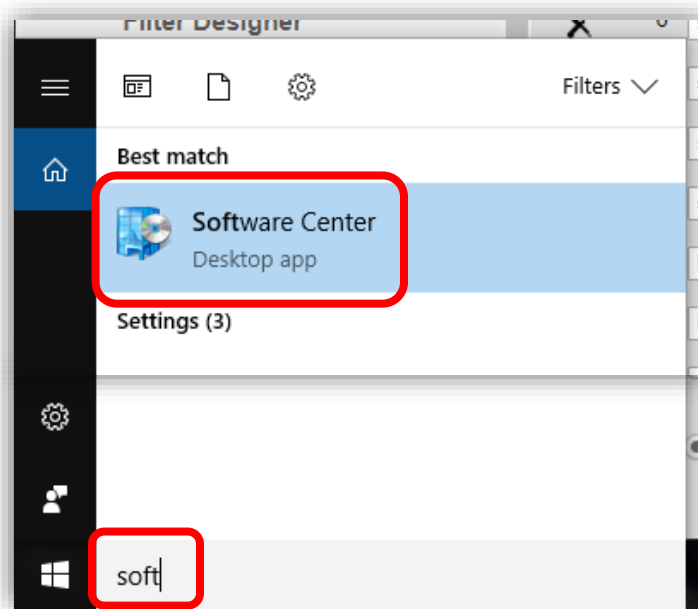


Not all software available for use on district PCs is automatically installed. You can find other programs that may be useful to you by following these steps

1. Go into the Software Center by searching for it in the taskbar.



2. Select the relevant product from the list of available software and click install.
 - a. Please make sure to wait until the installation is complete before opening the program, otherwise the process will fail. This will take approximately 5 minutes.

