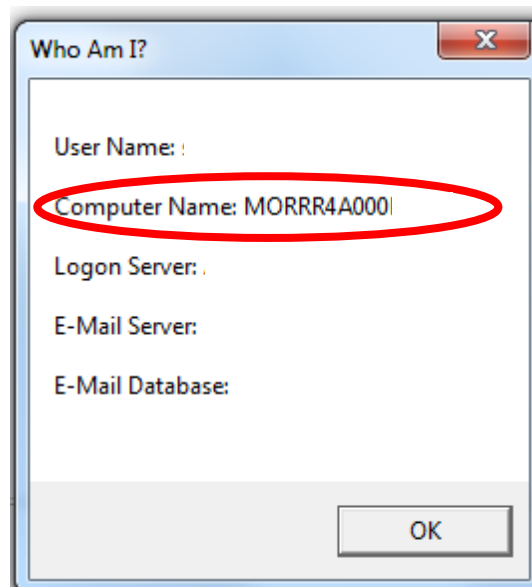
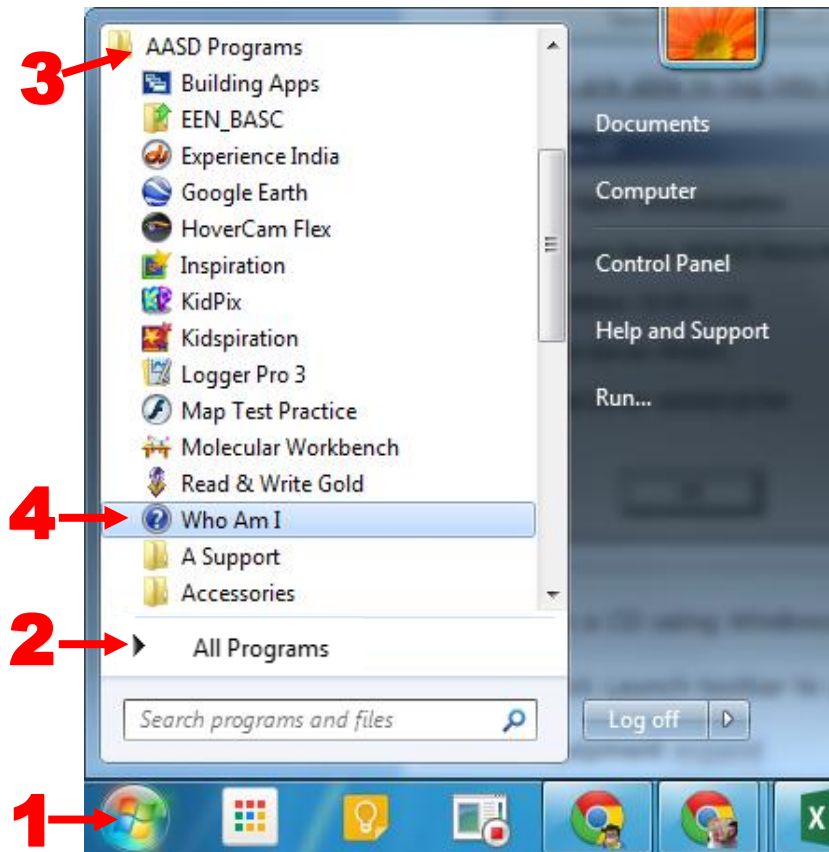


If you are able to log on to your workstation with your District ID and Password, do the following.

- 1) Click (1) Windows Start Menu >(2) All Programs >(3) AASD Program >(4) Who Am I?



If you are NOT able to log on to your workstation with your District ID and Password, do the following.

- 1) Press <Ctrl><Alt><Delete>, then click on “How do I log on to another domain?”

